



Like us on Facebook at  
Hutchinson PRCE  
320-587-2975  
[www.hutchinsonprce.com](http://www.hutchinsonprce.com)

# City of Hutchinson



Recreation Center  
900 Harrington Street  
Hutchinson, MN 55350



## Guide To Trails and Parks

### Traffic Principles

#### Ride on the Right

- Always ride with the flow of traffic
- Do not ride on the sidewalk
- Allow yourself room to maneuver around hazards

#### Yield to traffic in busier lanes

- Roads with higher traffic volumes should be given right-of-way
- Always use signals to indicate your intentions to move position
- Look behind you to indicate your desire to move and to make sure that you can

#### Yield to traffic in destination lane

- Traffic in your destination lane has the right-of-way
- Making eye contact with drivers lets them know that you see them
- Signal and make your lane change early, before you need to

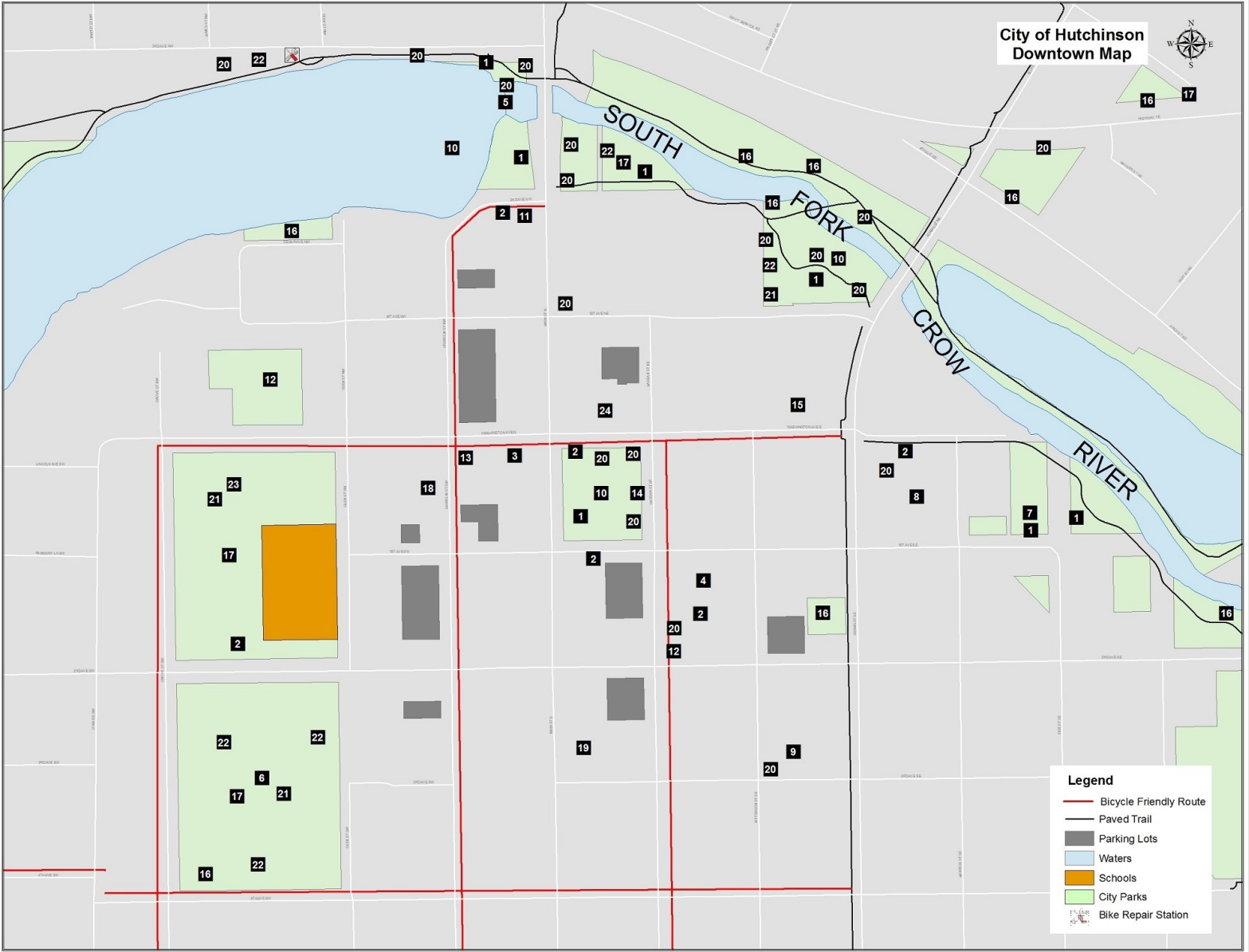
#### Directional Positioning

- Position yourself in the right-most lane that goes in the direction of your destination
- Ride in the right third of the lane
- Avoid being overtaken in narrow-lane situations by riding in the middle of the lane

#### Speed Positioning

- Position yourself relative to the speed of other traffic
- Left-most lane is for fastest moving traffic, right-most for slower traffic
- Yield to faster moving vehicles by staying to the right in the lane

(<https://www.bikeleague.org/content/ride-better-tips>)



### SIGNAL YOUR TURN



Left Turn



Right Turn



Right Turn  
Option 2



Stop or  
Slowing  
Down

#### Bicycle Friendly Route

**Sharrow:** A word blend of "share" and "arrow," the term describes roadway markings intended to guide bike riders along a safer path through city streets while reminding motorists that the road is for cyclists, too.



#### Intersections

The most important part of riding through intersections happens before you reach them, so be prepared.

» MOVE TO THE PROPER LANE WELL IN ADVANCE.

» SIGNAL YOUR INTENTIONS.

» TAKE EXTRA CARE AROUND TRUCKS, BUSES AND OTHER LARGE VEHICLES.

KEEP YOUR DISTANCE AND STAY BEHIND LARGE VEHICLES — THEY HAVE BIG BLIND SPOTS AND MAKE WIDE TURNS. YOU DO NOT WANT TO GET TRAPPED AGAINST THE CURB.

### POINTS OF INTEREST

- 1 Benches
- 2 Bike Racks
- 3 Chamber of Commerce
- 4 City Center
- 5 Crow River Dam
- 6 Disc Golf
- 7 Dog Park
- 8 Farmer's Market
- 9 Fire Station
- 10 Fountain
- 11 Gateway Park green space
- 12 Historic Buildings/Homes

- 13 Hutchinson Center for the Arts
- 14 Library
- 15 Liquor Store
- 16 Picnic Tables
- 17 Playgrounds
- 18 Police Station
- 19 Post Office
- 20 Public Art/Murals
- 21 Restrooms
- 22 Shelters
- 23 Tennis Courts
- 24 Theatre

COH Bicycle Map @ <https://www.hutchinsonprce.com/parks-campground-and-outdoor-activities/>



City of Hutchinson  
Trails & Parks



This map sponsored  
by these partners:



Hutchinson Health



- City of Hutchinson**
- Bike Lanes
  - Bicycle Friendly Route
  - Gravel
  - Paved Trail
  - DOWNTON AREA ON BACK
  - Waters
  - Schools
  - City Parks

